



2009 Short Form CATALOG

DIGITAL INDICATORS & CONTROLLERS



FLOW



LEVEL



PRESSURE



TEMPERATURE



See Precision Digital's products in action. Visit www.predig.com/videos to watch our product videos.

THE MOST POWERFUL LINE OF 1/8 DIN PANEL METERS

Dual-Line Display • NEMA 4X Front • Sunlight Readable Display • 2 or 4 Relays + Isolated 4-20 mA Output Options

PROVU
SERIES



Process

PD6000 PROVU PROCESS METER

- 0-20 mA, 4-20 mA, 0-5 V, 1-5 V, and ± 10 V inputs
- Isolated 24 VDC @ 200 mA transmitter power supply
- Isolated 24 VDC @ 40 mA 4-20 mA output power supply
- Math functions for round horizontal tanks
- 32-point linearization with free software
- Multi-Pump alternation control

PD7000 PROVU TEMPERATURE METER

- J, K, T, E, R, S, B, N, C thermocouples
- 100 or 1000 Ω platinum, 10 Ω copper, 120 Ω nickel RTDs
- 0.1 $^{\circ}$ resolution
- Averages up to 10 RTD sensors



Temperature



Flow

PD6200 PROVU ANALOG INPUT FLOW RATE/TOTALIZER

- 0-20 mA, 4-20 mA, 0-5 V, 1-5 V, and ± 10 V inputs
- Isolated 24 VDC @ 200 mA transmitter power supply
- Open channel flow with programmable exponent
- Square root extraction
- 32-point linearization

PD6300 PROVU PULSE INPUT FLOW RATE/TOTALIZER

- Pulse, open collector, NPN, PNP, TTL, switch contact, sine wave (coil), square wave inputs
- 5, 10 or 24 VDC flowmeter power supply
- Gate function for rate display of slow pulse rates
- K-Factor, internal scaling, or external calibration
- 4-20 mA output option converts the pulse input to an isolated 4-20 mA output



Flow

COMMON PROVU FLOW RATE/TOTALIZER FEATURES

- Dual-Line display shows rate & total at same time
- Total, grand total, or non-resettable grand total
- 9-digit totalizer with total overflow feature
- Any relay assigned to rate or total
- 4-20 mA output assigned to rate or total
- Sampling relay

PROVU DUAL-LINE DISPLAY MAKES ALL THE DIFFERENCE



Two Lines Are Better Than One!

- Two Lines = More Information + Easier Setup
- Even with **TWO LINES**, the ProVu's Main Display is Still **BIGGER**



UV Resistant
Sunlight Readable



Front Panel
NEMA 4X Rated

Large
0.6" Digits

Sunlight
Readable

Rugged Front

PV, Max (Peak),
Min (Valley)

Dual-Line
6-Digit
Display

Rate

Overflow
Indication

Programmable
Function Keys

User Configurable
Display

Total

NEMA 4X

Alarm
Status Indicators



ProVu is Not Just a Pretty Face

1/8 DIN SHALLOW DEPTH METERS

NEMA 4X IP65 Front • Shallow Depth Case • AC or DC Power

OVERVIEW



PD765 TRIDENT & TRIDENT X2 PROCESS & TEMPERATURE METER

- 4-20 mA, ± 10 V, TC & RTD inputs
- 4-digit display
- Trident: 0.56"; Trident X2: 1.20"
- Sunlight readable display
- Two relays option with alternation & time delay
- 4-20 mA analog output option
- Transmitter power option
- Serial communication options
- Free MeterView® software
- Modbus® RTU option



The Trident X2 Has the **LARGEST** Display of any 1/8 DIN Meter

QUICK SELECT GUIDE



PD865 SNOOPER MODBUS SERIAL INPUT METER

- RS-485 Modbus® RTU input
- 6-digit display
- Two relays standard
- 4-20 mA analog output option
- Up to four pump alternation control



PD644 JAVELIN D HIGH-VOLTAGE DC METER

- 0-300 VDC input
- 4-digit display
- 4-20 mA analog output
- Two relays option
- Modbus® RTU option



APPLICATIONS



PD603 SABRE P LOW-COST OEM PROCESS METER

- 4-20 mA, ± 10 V inputs
- 4-digit display
- Easy front panel programming
- Transmitter power option



PD743 SABRE T LOW-COST OEM TEMPERATURE METER

- J, K, T, E thermocouple & 100 Ω Pt RTD
- 4-digit display
- Easy front panel programming
- Maximum/Minimum display

FLUIDWELL F-SERIES

OVERVIEW

Displayed function
Clear 0.7" or 1" digits
Measurement units for TOTAL
Trend indication
Operating temperature -30/-40 to 80°C
Large LCD with backlight option
Status indicator
Rugged tactile response keys
0.3" alphanumeric display
Engineering units
NEMA 4X aluminum or plastic field enclosure

FLUIDWELL
Accurate Liquid Management

- 4-20 mA, 0-10 V, pulse, or RTD inputs
- AC, DC, loop, or battery power
- Rugged NEMA 4X enclosures
- Field & panel mount enclosures
- Intrinsically safe or explosion-proof
- Operates from -30/-40 to 80°C
- Serial Modbus® communications
- Backlighting

C Hazardous Location

Flow • Temperature • Level • Pressure

QUICK SELECT GUIDE

RATE/TOTALIZERS

- Analog or pulse input
- Multi-Point linearization
- 7-digit flow rate display
- 7-digit total display
- 11-digit non-resettable total
- Bi-Directional measurement
- High & low alarms
- Analog & pulse outputs



BATCH CONTROLLERS

- Analog or pulse input
- 1 or 2 stage batch control
- Start, stop, & pause buttons
- Overrun correction
- Count up or count down
- Flow rate, preset value, & total display
- 11-digit non-resettable total



FLOW COMPUTERS

- Analog or pulse input
- Temperature compensation for liquids
- Temperature & pressure compensation for gas
- Ratio calculation & monitoring
- Fuel consumption calculation
- 11-digit non-resettable total



TEMPERATURE, LEVEL & PRESSURE INDICATORS

- Analog or RTD input
- Multi-Point linearization
- Displays volume, height & %
- Dual pressure inputs
- High & low alarms
- Analog output



GENERAL PURPOSE INDICATORS

- Loop-Powered indicators
- On-Screen engineering units
- Pie graph indicator
- Adjustable backlight intensity
- 5½ digits, 1" high display



Custom build yours at www.predig.com/configurator

APPLICATIONS

LARGE DISPLAY METERS & TOTALIZERS

OVERVIEW

PD650 NEMA 4X



2.3" High LEDs



PD650

PD655 PD656

(Actual Digit Size)

PD656 EXPLOSION-PROOF



0.8" High LEDs

- 4-20 mA, 1-5 V, 0-5 V, 0-10 V inputs
- 4½ digits & extra zero display for rate
- 6-digit display for total
- Programmable exponent for weirs & flumes
- Pump alternation control
- Two 24 VDC transmitter power supplies
- 200 mA transmitter power supply option
- 2 or 4 relays & 4-20 mA output options
- 115, 230 VAC, or 24 VDC power
- Operates from -20 to 65°C

PD655 NEMA 4X



1.0" High LEDs

QUICK SELECT GUIDE

DIGITAL PRESSURE GAUGES



These multi-function digital pressure gauges are a great solution that will save you time, money, and space. They are loaded with features such as large numeric and bargraph backlit LCD, 4-20 mA output, and relay options. Battery power is standard; loop-power and 12-36 VDC power are optional.

- General purpose, industrial, & test models
- Direct pressure input
- Battery, loop, or DC powered
- FM approved & CSA certified models



APPLICATIONS

CONSOLIDATOR® MULTI-CHANNEL CONTROLLERS



Consolidator®



OVERVIEW

CONSOLIDATOR 4 FEATURES

- Four 4-20 mA inputs
- Four 4-20 mA outputs

CONSOLIDATOR 8 FEATURES

- Eight 4-20 mA inputs
- Two 4-20 mA outputs

COMMON FEATURES

- Four pulse inputs
- Four digital inputs
- Nine 10 A relays



ADVANTAGES

- Easy-to-Read backlit LCD
- Readable in direct sunlight
- Bargraphs & numeric screens
- Easy to set up & program
- RS-232 Modbus® RTU
- Direct Modbus PV inputs
- Power from AC or DC
- Wall or panel mount
- 32-point linearization
- Free programming & data logging software



QUICK SELECT GUIDE



CONSOLIDATOR® WIRELESS SYSTEMS

- Allows remote monitoring & alarming
- Reduces installation costs versus hard-wired
- Minimizes manual reading costs
- Monitors up to eight points
- Communicates up to 1200 feet indoors, 5 miles outdoors
- Monitors & data logs at remote office location
- Makes multiple-use of data

APPLICATIONS

LOOP-POWERED PANEL METERS & RATE/TOTALIZERS

OVERVIEW

PD683 & PD688 PANEL METERS



PD684 & PD689 RATE/TOTALIZERS



PD688 Only

- 4-20 mA input
- 2 V drop (5.7 V with backlight)
- 5-digit LCD, 0.6" high
- Loop-Powered backlight
- Custom engineering units
- 20-segment bargraph display
- NEMA 4X, IP65 front
- Linear, square root, and programmable exponent
- Alarm or pulse output option
- Operates from -40 to 65°C



PD689 Only

LOOP-POWERED NEMA 4X & EXPLOSION-PROOF METERS

QUICK SELECT GUIDE

PD685 & PD686 NEMA 4X



PD687 EXPLOSION-PROOF



- 4-20 mA input
- 1 V drop
- 3½ digits LCD, 1.0" high
- Operates from -40 to 80°C



PD686 & PD687-EX Only

LOW-COST LOOP-POWERED METERS

PD661 EXPLOSION-PROOF

- 4-20 mA input
- 1.5 V drop (3.5 V with backlight)
- 3½ digits LCD, 0.5" high
- Loop-Powered backlight option
- Operates from -40 to 80°C



PD662 HATCHET NEMA 4X GENERAL PURPOSE



- 4-20 mA input
- 1.7 V drop (4.9 V with backlight)
- 3½+ digits LCD, 0.6" high
- Loop-Powered backlight option
- Operates from -40 to 85°C (-55 to 85°C with heater option)

LOOP-POWERED RATE/TOTALIZERS

PD697 NEMA 4X GENERAL PURPOSE



PD698 EXPLOSION-PROOF



- 4-20 mA linear or square root input
- 5.6 V drop (7 V with backlight)
- 4½ digits LCD, 0.5" high for rate
- 6-digit LCD, 0.5" high for total
- Loop-Powered backlight option
- Operates from 0 to 65°C

APPLICATIONS

VIGILANTE® II ALARM ANNUNCIATORS

OVERVIEW



PD154
4-POINT

PD158
8-POINT



PD154 & PD158 VIGILANTE® II

- All common ISA sequences including first-out
- Switch, transistor, and logic level inputs
- Free custom message labels
- AC or DC power
- NEMA 4X, IP65 front
- Built-in 85 dB horn
- 2 SPDT relays for alarm activated devices
- Silence, acknowledge, and reset functions
- Shallow depth 1/8 DIN case

MINIMUX® II TEMPERATURE & PROCESS SCANNER



QUICK SELECT GUIDE

PD138 MINIMUX® II

- Thermocouples, RTDs, process, AC & DC inputs
- 8 inputs
- Unlimited number of units per system
- Adjustable dwell time for each channel
- Independent alarm input for each channel

PDS178 SCANNING & ALARM SYSTEM

The PDS178 is a kit that includes a PD765-6R2-00 Trident and PD138-3 Minimux II in a PDA2821 NEMA 4X enclosure. The PDS178 is a Temperature or Process Scanning and Alarm System ready to wire into your application. Get all this at a significant savings versus buying separately.

NOVA SERIES PROCESS & TEMPERATURE CONTROLLERS

From simple temperature indication and on/off control to auto-tuning PID control applications, the Nova Series Process and Temperature Controllers handle a variety of applications with ease and a high degree of accuracy.

Key Features



- Universal process & temperature input
- Relay & analog outputs standard
- High accuracy display & control



APPLICATIONS

1/8 DIN DIGITAL PANEL METERS QUICK SELECT GUIDE

Process & Temperature

Process Meters

Temperature Meters



Model	PD765 Trident	PD765 Trident X2	PD603 Sabre P	PD6000 ProVu	PD743 Sabre T	PD7000 ProVu
Type	Process & Temp	Process & Temp	Process	Process	Temperature	Temperature
Input Field Selectable	4-20 mA, 0-20 mA 1-5 V, 0-5 V -10 to 10 V J, K, T, E TC 100 Ω Pt RTD	4-20 mA, 0-20 mA 1-5 V, 0-5 V -10 to 10 V J, K, T, E TC 100 Ω Pt RTD	4-20 mA 1-5 V 0-5 V 0-10 V	4-20 mA 0-20 mA 1-5 V 0-5 V -10 to 10 V	J, K, T, E TC 100 Ω Pt RTD	J, K, T, E, R, S, B, N, C TC 100 or 1000 Ω Pt RTD 10 Ω Cu RTD 120 Ω Ni RTD
Display Lines	4-digit 1 line	4-digit 1 line	4-digit 1 line	6-digit 2 lines	4-digit 1 line	6-digit 2 lines
Digit Height	0.56" (14.2 mm)	1.20" (30.5 mm)	0.56" (14.2 mm)	0.60", 0.46"	0.56" (14.2 mm)	0.60", 0.46"
Process/Rate Total	9,999	9,999	9,999	999,999	9,999	9,999.9
Toggle/Dual R+T	N/A	N/A	N/A	N/A	N/A	N/A
Display Intensity	Adjustable	Adjustable	Fixed	Adjustable	Fixed	Adjustable
Programming Method	Front Panel Meter Copy PC with MeterView	Front Panel Meter Copy PC with MeterView	Front Panel	Front Panel Meter Copy	Front Panel	Front Panel Meter Copy
Root Function Linearization	Square Root	Square Root	N/A	Square Root Round Horizontal Tank Programmable Exp. Math Function 32-point	N/A	N/A
Max/Min Display	Toggle, 10 sec, momentary, continuous	Toggle, 10 sec, momentary, continuous	Toggle, 10 sec, momentary, continuous	Dual-Line or Toggle	Toggle, 10 sec, momentary, continuous	Dual-Line or Toggle
Transmitter Power	Dual 24 VDC @ 200 mA & 40 mA (option)	Dual 24 VDC @ 200 mA & 40 mA (option)	24 VDC @ 200 mA (option)	24 VDC @ 200 mA or 5/10 VDC @ 50 mA (standard), 24 VDC @ 40 mA (option)	N/A	24 VDC @ 200 mA or 5/10 VDC @ 50 mA (standard), 24 VDC @ 40 mA (option)
Relays	2 Form C 3 A	2 Form C 3 A	N/A	2 or 4 Form C 3 A + 4 external Form A	N/A	2 or 4 Form C 3 A + 4 external Form A
Relay Operation	High or low alarm 100% deadband Auto & manual reset Latch or non-latch Pump alternation On & off time delay Fail-Safe or normal Front panel ACK or PC	High or low alarm 100% deadband Auto & manual reset Latch or non-latch Pump alternation On & off time delay Fail-Safe or normal Front panel ACK or PC	N/A	High or low alarm 100% deadband Auto & manual reset Latch or non-latch Pump alternation On & off time delay Fail-Safe or normal Front panel ACK or I/O Sampling	N/A	High or low alarm 100% deadband Auto & manual reset Latch or non-latch Pump alternation On & off time delay Fail-Safe or normal Front panel ACK or I/O
4-20 mA Output	Process Variable	Process Variable	N/A	PV, Max/Min, Setpoint, Manual	N/A	PV, Max/Min, Setpoint, Manual
Serial Comm.	RS-232, RS-422/485	RS-232, RS-422/485	N/A	RS-232, RS-422/485	N/A	RS-232, RS-422/485
Expandable	N/A	N/A	N/A	Relays, I/O, Comm.	N/A	Relays, I/O, Comm.
Programmable I/O	None	None	None	8 Inputs / 8 Outputs	None	8 Inputs / 8 Outputs
Protocol	Proprietary ASCII Modbus RTU (Option)	Proprietary ASCII Modbus RTU (Option)	N/A	Modbus RTU	N/A	Modbus RTU
Software	MeterView®, LabVIEW	MeterView®, LabVIEW	N/A	Linearization Utility	N/A	N/A
Power Options	Universal 85-265 VAC or 12-36 VDC	Universal 85-265 VAC or 12-36 VDC	Universal 85-265 VAC or 12-36 VDC	Universal 85-265 VAC or 12/24 VDC	Universal 85-265 VAC or 12-36 VDC	Universal 85-265 VAC or 12/24 VDC
Operating Temperature	0 to 65°C	0 to 65°C	0 to 65°C	-40 to 65°C	0 to 65°C	-20 to 65°C
Approvals	CE, UL & C-UL	CE, UL & C-UL	CE, UL & C-UL	CE, UL & C-UL	CE, UL & C-UL	CE, UL & C-UL
Standard Warranty	3 years parts & labor	3 years parts & labor	1 year parts & labor	3 years parts & labor	1 year parts & labor	3 years parts & labor

OVERVIEW

QUICK SELECT GUIDE

APPLICATIONS

1/8 DIN DIGITAL PANEL METERS QUICK SELECT GUIDE

Flow Rate/Totalizers

Strain Gauge

High-Voltage

Serial Data



Model	PD6200 ProVu	PD6300 ProVu	PD691	PD644 Javelin D	PD865 Snooper
Type	Rate/Totalizers	Rate/Totalizers	Strain Gauge	High-Voltage DC	Serial Data
Input Field Selectable	4-20 mA 0-20 mA 1-5 V 0-5 V -10 to 10 V	Pulse or square wave Open collector or switch 0-5 V, 0-12 V @ 30 kHz	±15 mV ±100 mV 0-30 mV 0-200 mV	0 to 300 VDC	Modbus RTU
Display Lines Digit Height Process/Rate Total Toggle/Dual R+T	6-digit 2 lines 0.60", 0.46" 999,999 999,999,999† Dual	6-digit 2 lines 0.60", 0.46" 999,999 999,999,999† Dual	4½ digits 1 line 0.56" (14.2 mm) 199,99(0) N/A N/A	4-digit 1 line 0.56" (14.2 mm) 9,999 N/A N/A	6-digit 1 line 0.56" (14.2 mm) 999,999 N/A N/A
Display Intensity	Adjustable	Adjustable	Fixed	Adjustable	Adjustable
Programming Method	Front Panel Meter Copy	Front Panel Meter Copy	Front Panel	Front Panel Meter Copy PC with Modbus	Front Panel PC with Modbus
Root Function Linearization	Square Root Round Horizontal Tank Programmable Exp. Math Function 32-point	32-point	N/A	N/A	Square Root Programmable Exp. 16-point
Max/Min Display	Dual-Line or Toggle	Dual-Line or Toggle	N/A	Toggle, 10 sec, momentary, continuous	Toggle, 10 sec, momentary, continuous
Transmitter Power	24 VDC @ 200 mA or 5/10 VDC @ 50 mA (stan- dard), 24 VDC @ 40 mA (option)	24 VDC @ 200 mA or 5/10 VDC @ 50 mA (stan- dard), 24 VDC @ 40 mA (option)	24 VDC @ 20 mA 5 or 10 VDC @ 50 mA	24 VDC @ 200 mA (option)	24 VDC @ 200 mA (option)
Relays	2 or 4 Form C 3 A + 4 external Form A	2 or 4 Form C 3 A + 4 external Form A	2 or 4 Form C 2 A	2 Form C 3 A	2 Form A, 2 Form C
Relay Operation	High or low alarm 100% deadband Auto & manual reset Latch or non-latch Pump alternation On & off time delay Fail-Safe or normal Front panel ACK or I/O Sampling	High or low alarm 100% deadband Auto & manual reset Latch or non-latch Pump alternation On & off time delay Fail-Safe or normal Front panel ACK or I/O Sampling	High or low alarm 100% deadband Auto & manual reset Fail-Safe or normal	High or low alarm 100% deadband Auto & manual reset Latch or non-latch Pump alternation On & off time delay Fail-Safe or normal Front panel ACK or PC	High or low alarm 100% deadband Auto & manual reset Latch or non-latch Pump alternation On & off time delay Fail-Safe or normal Front panel ACK or PC
4-20 mA Output	Rate, Total, Grand Total Max, Min, Setpoint, Manual	Rate, Total, Max, Min, Setpoint, Manual	Process Variable	Process Variable	Process Variable
Serial Comm.	RS-232, RS-422/485	RS-232, RS-422/485	N/A	RS-485	RS-485
Expandable	Relays, I/O, Comm.	Relays, I/O, Comm.	N/A	N/A	N/A
Programmable I/O	8 Inputs / 8 Outputs	8 Inputs / 8 Outputs	N/A	N/A	N/A
Protocol	Modbus RTU	Modbus RTU	N/A	Proprietary ASCII Modbus RTU (Option)	Modbus RTU
Software	Linearization Utility	Linearization Utility	N/A	MeterView® (data logging only)	Any Modbus RTU compatible
Power Options	Universal 85-265 VAC or 12/24 VDC	Universal 85-265 VAC or 12/24 VDC	115 or 230 VAC	Universal 85-265 VAC or 12-36 VDC	Universal 85-265 VAC or 12-36 VDC
Operating Temperature	-40 to 65°C	-40 to 65°C	0 to 60°C	0 to 65°C	0 to 65°C
Approvals	CE, UL & C-UL	CE, UL & C-UL	UL & C-UL	UL & C-UL	UL & C-UL
Standard Warranty	3 years parts & labor	3 years parts & labor	2 years parts & labor	3 years parts & labor	3 years parts & labor

† With overflow

ENCLOSURES QUICK SELECT GUIDE

OVERVIEW



Plastic

Internally Mounted NEMA 4X Enclosures

Model	# of Meters	Type				
		A	B	C	D	E
PDA2407	1	•	•	•	•	•
PDA2408	2		•			
PDA2409	3		•			
PDA2410	4		•			
PDA2411	2	•	•	•	•	•
PDA2412	3	•				
PDA2414	2	•	•	•	■	•
PDA2415	4	•				

• Available ■ 1 Standard



Steel

Externally Mounted NEMA 4 Enclosures

Model	# of Meters	Type				
		A	B	C	D	E
PDA2701*	1			•		
PDA2702*	2			•		
PDA2703*	3			•		
PDA2704*	4	•	•	•		•
PDA2704-1	1	•	•	•		•
PDA2704-2	2	•	•	•		•
PDA2705*	5	•	•	•		•
PDA2706*	6	•	•	•		•
PDA2713	4	•		•	■	•
PDA2722	2			•	■	•

• Available ■ 1 Standard



Cast-Aluminum

Explosion-Proof Enclosures for Panel Meters & Fluidwell

Model	# of Meters	Type				
		A	B	C	D	E
PDA2444	1	•	•	•	•	•
PDA2445	1		•			
PDA2446	2	•		•	•	•
PDA2448	1					Fluidwell



Plastic

Externally Mounted Low-Cost NEMA 4X Enclosures

Model	# of Meters	Type				
		A	B	C	D	E
PDA2801	1			•		
PDA2811	1	•	•	•		•
PDA2812	2	•	•	•		•
PDA2821	2	•		•	■	•

• Available ■ 1 Standard

Externally Mounted NEMA 4X Enclosures

Model	# of Meters	Type				
		A	B	C	D	E
PDA2501*	1		•	•		
PDA2502*	2		•	•		
PDA2503*	3		•	•		
PDA2504*	4	•	•	•		•
PDA2505*	5	•	•	•		•
PDA2506*	6	•	•	•		•
PDA2507	7	•	•	•		•
PDA2508	8	•	•	•		•
PDA2509	9	•	•	•		•
PDA2510	10	•	•	•		•
PDA2512	2	•	•	•		•
PDA2522	2			•	■	•

• Available ■ 1 Standard



Thermoplastic

NEMA 4X ConsoliDator Enclosures

Model	# of Meters	Meter Types	Size
PDA2901	1	ConsoliDator	Small
PDA2904	1	ConsoliDator	Large



Plastic

Externally Mounted NEMA 4X Enclosures

Model	# of Meters	Type				
		A	B	C	D	E
PDA2601*	1			•		
PDA2602*	2			•		
PDA2603*	3			•		
PDA2604*	4	•	•	•		•
PDA2605*	5	•	•	•		•
PDA2606*	6	•	•	•		•
PDA2622	2			•	■	•

• Available ■ 1 Standard



Stainless Steel

Meter Types

Type	Meters
A	PD118, PD690, PD691, PD692, PD693, PD750, PD751, and PD752
B	PD542, PD543, and PD562
C	PD603, PD644, PD683, PD684, PD688, PD689, PD743, PD765, and PD865
D	PD138, PD154, and PD158
E	PD6000, PD6200, PD6300, and PD7000



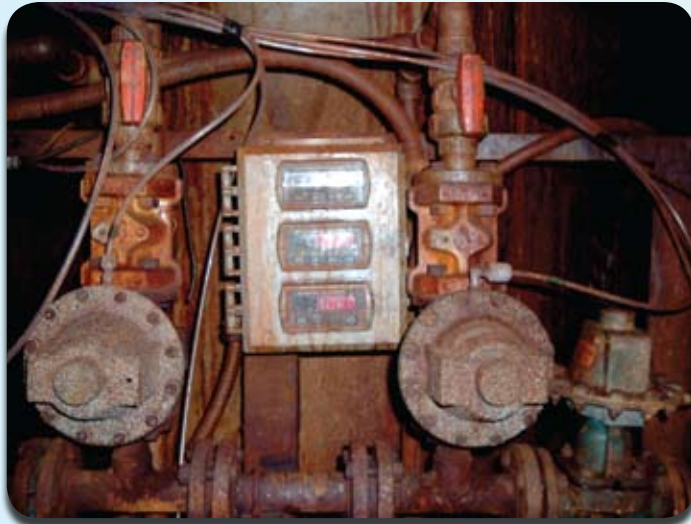
NOTES

* Vertical panel cutouts available for Type D meters. To order add -V at the end of part number (e.g. PDA2501-V).

QUICK SELECT GUIDE

APPLICATIONS

APPLICATION PHOTOS & DIAGRAMS



PD765 Tridents in a Steel Mill



Tank Level Monitoring with PD650



PD765 Tridents Measuring Temperature



Convenient Display for Overhead Transmitters



PD687 in Hazardous Area



Visual Flow Indication with ConsoliDator

OVERVIEW

QUICK SELECT GUIDE

APPLICATIONS

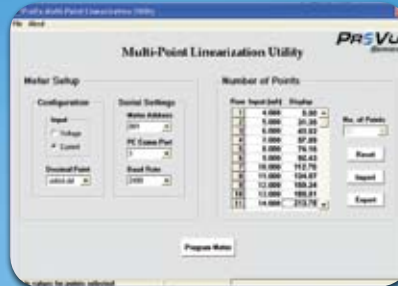
APPLICATION PHOTOS & DIAGRAMS

OVERVIEW



PD656 Explosion-Proof Level Indicator

FREE LINEARIZATION UTILITY SOFTWARE



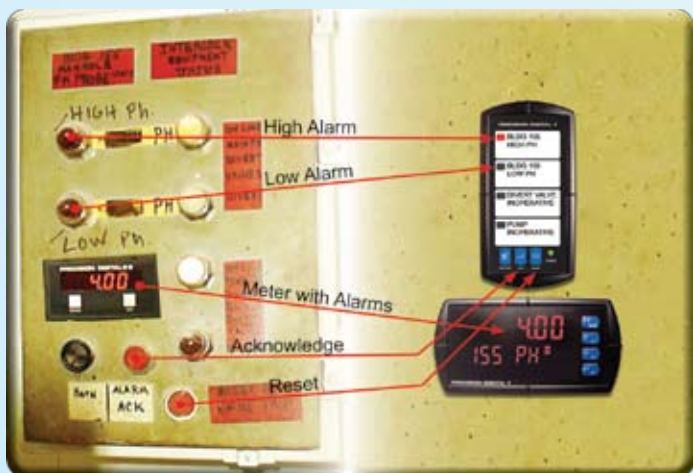
PROVU SERIES

- Easily enter points or values using utility table
- Import points or values from an Excel® spreadsheet
- Save points or values into an Excel® spreadsheet
- Up to 32-points

Download yours at

WWW.PREDIG.COM/PROVU

QUICK SELECT GUIDE



Before ————— After

Replacing Lights, Horns, Buttons, Labels, Relays & Logic with Vigilante® II



PD688 Loop Leader in Div 2 Panel

FREE METERVIEW® SOFTWARE



- Program Trident from PC
- Monitor up to 100 Tridents

Watch MeterView® Video at

WWW.PREDIG.COM/METERVIEW

APPLICATIONS



NOVA Controllers & NOVA Software

APPLICATION PHOTOS & DIAGRAMS



Two Tridents in a PDA2502 Enclosure



Alarm Monitoring with ConsoliDator

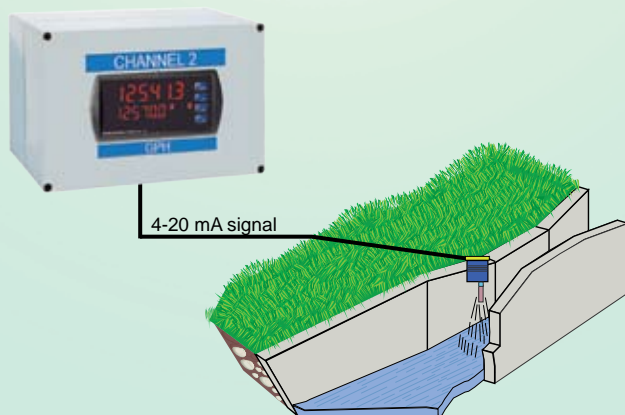


Lube Oil Flow Monitoring with Fluidwell



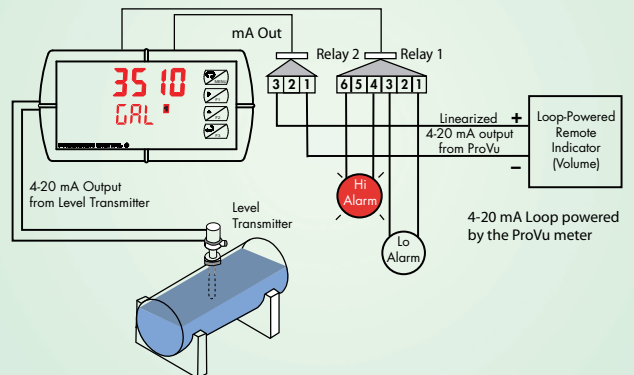
Bearing Temperature Monitoring on a Ferry

Open Channel Flow



Programmable root function for weirs and flumes.

Round Horizontal Tank



This function automatically calculates the volume in a round horizontal tank with flat ends.

OVERVIEW

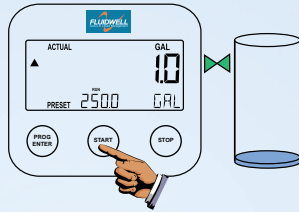
QUICK SELECT GUIDE

APPLICATIONS

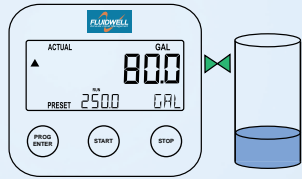
USE PRECISION DIGITAL PRODUCTS FOR BATCH CONTROL & PUMP ALTERNATION

Batch Control

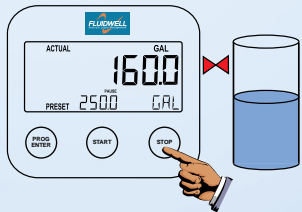
- 1 Start button is pressed



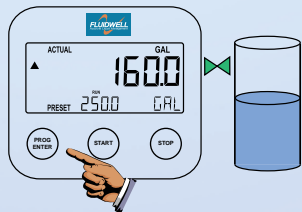
- 2 Barrel is filling



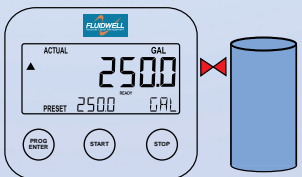
- 3 Operator stops batch to check something



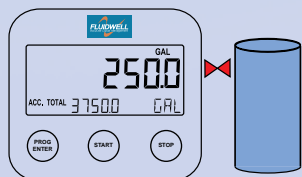
- 4 Operator starts batch again



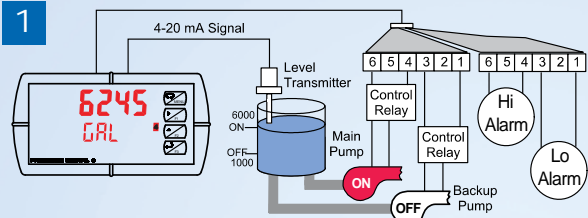
- 5 Batch reaches preset and filling stops



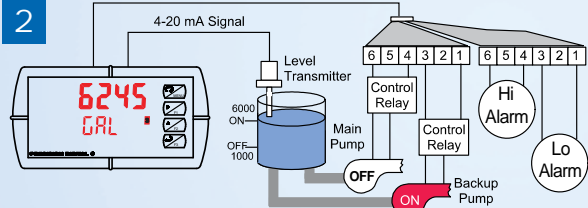
- 6 Alternative accumulated total displayed



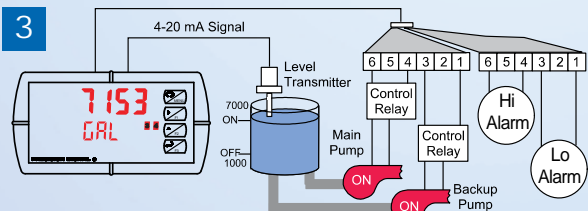
Pump Alternation Control with ProVu Series



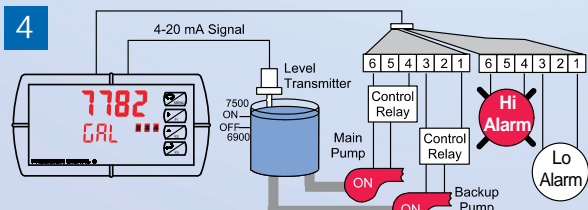
Relay #4 turns the main pump on at 6000 gallons and turns it off at 1000 gallons.



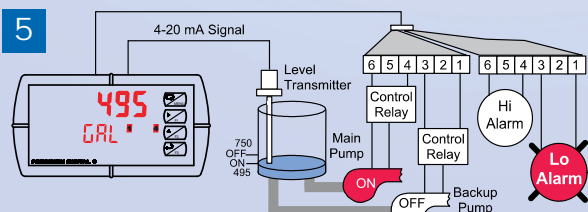
With the Pump Alternation feature activated, the next time the level reaches 6000 gallons, relay #3 transfers and starts the backup pump.



If the backup pump is not able to keep up, and the level reaches 7000 gallons, relay #4 transfers and starts the main pump as well.



Relay #2 trips the High Level Alarm at 7500 gallons and resets at 6900 gallons.



Relay #1 trips the Low Level Alarm at 495 gallons and resets at 750 gallons.

**PRECISION
DIGITAL**

www.predig.com

PRECISION DIGITAL CORPORATION
89 October Hill Road • Holliston MA 01746 USA
Tel. (800) 343-1001 • Fax (508) 655-8990

LMSDFC_C 06/09